

# H-Log

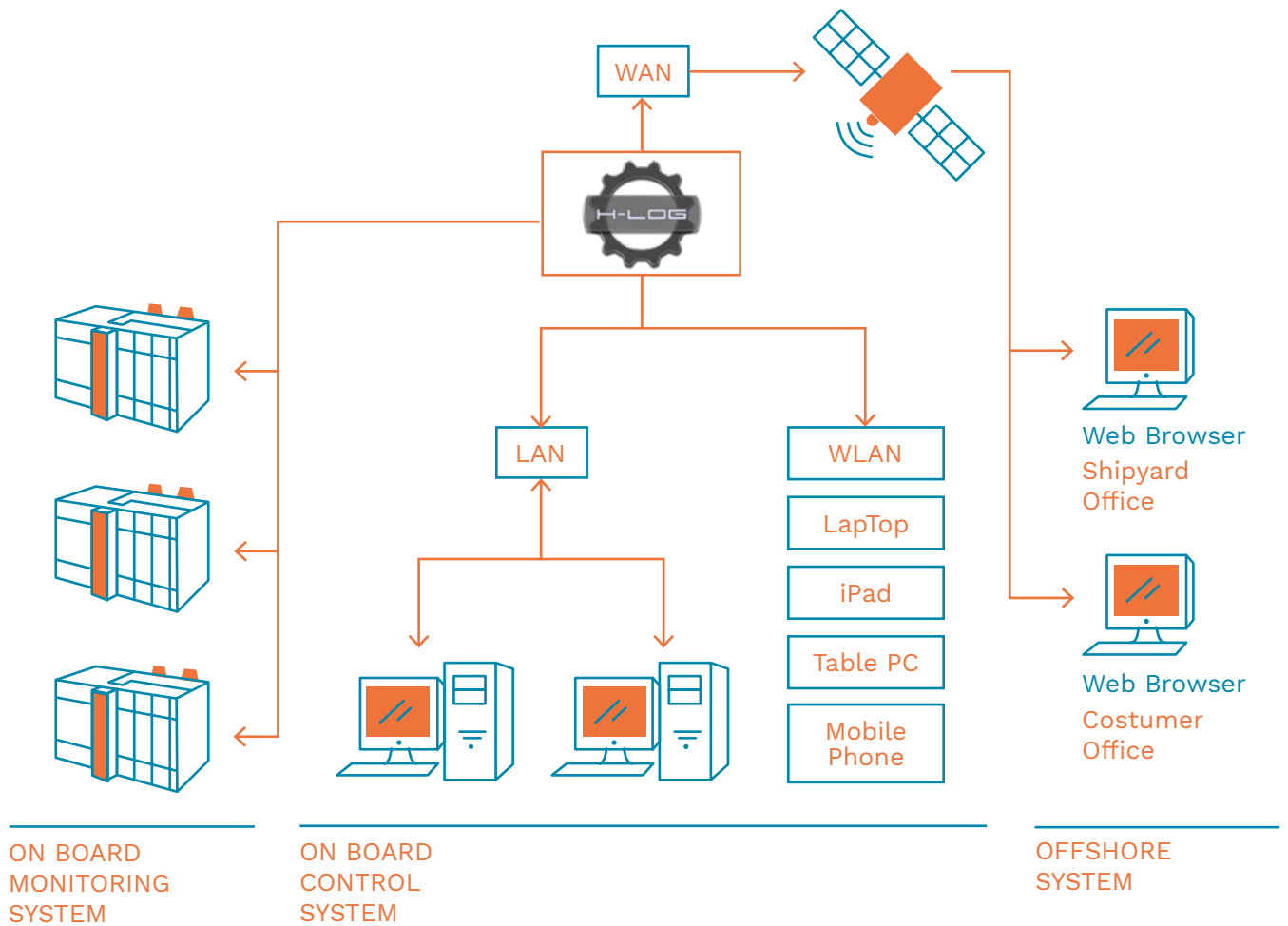
How “Big Data” can contribute to maximize the performances of a modern yacht?



H-LOG is our logging system designed for recording data and yacht events, in order to provide a non an useful tool for understanding the real systems working parameters and performances. In the meantime the analysis of the logged data could be a powerful tool for predictive maintenance. While traditional monitoring systems (DSC) are based on not synchronous readings from different systems, our systems are based on a systematic, coordinated and synchronous logging of all the variables.

## CHECK THE TREND

H-LOG is the most accurate system for trending the real working parameters of the yacht systems over a period.



## DATA SOURCES

- Navigation data
- Monitoring system
- Engines data
- Generators data
- Stabilizers system
- Power management system
- Steering system
- Hydraulics power unit
- Air conditioning system.

## CLOUD DATABASE AND PROCESSED DATA

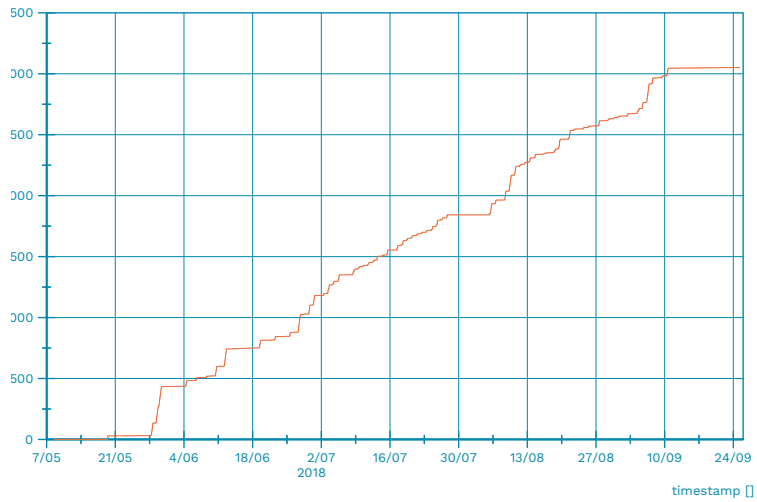
All the recorded data are stored on our cloud database and processed with our innovative statistical algorithm to provide the processed data.

1. Seasonal Course
2. Sailed miles
3. Yacht Performance Index

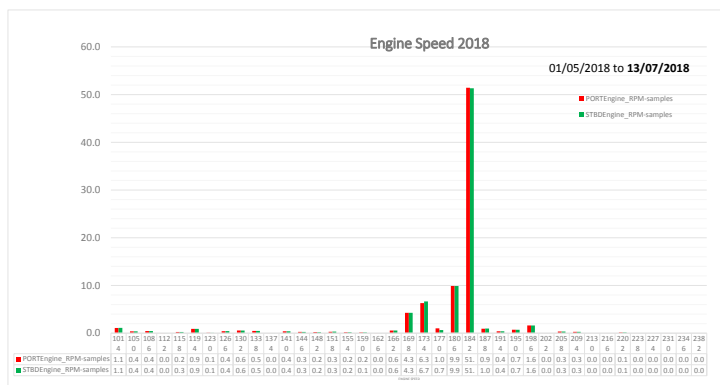
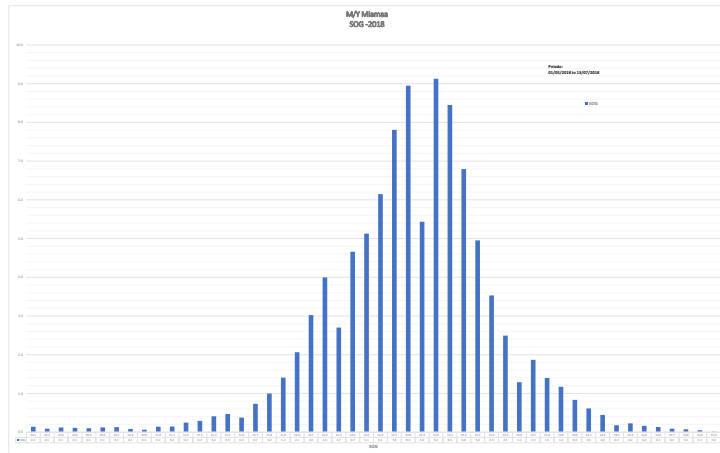
### 1. Seasonal Course



### 2. Sailed miles



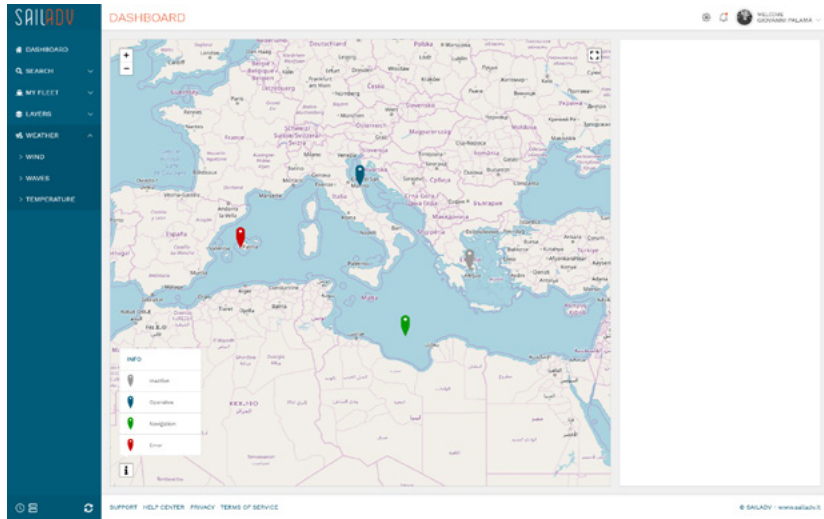
### 3. Yacht Performance Index



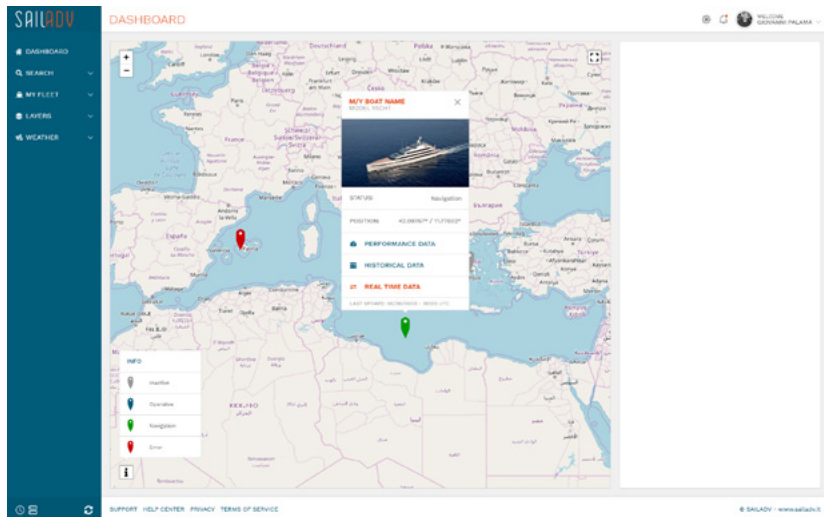
# H-LOG PORTAL

In order to maximize the usability of the logged information and their analysis, the data are available also on the web portal we have created, where real time analysis of performance data are displayed.

Fleet overview page



Yacht details pop up



Historical data page

